

## VIH y envejecimiento.

### HIV and Aging.

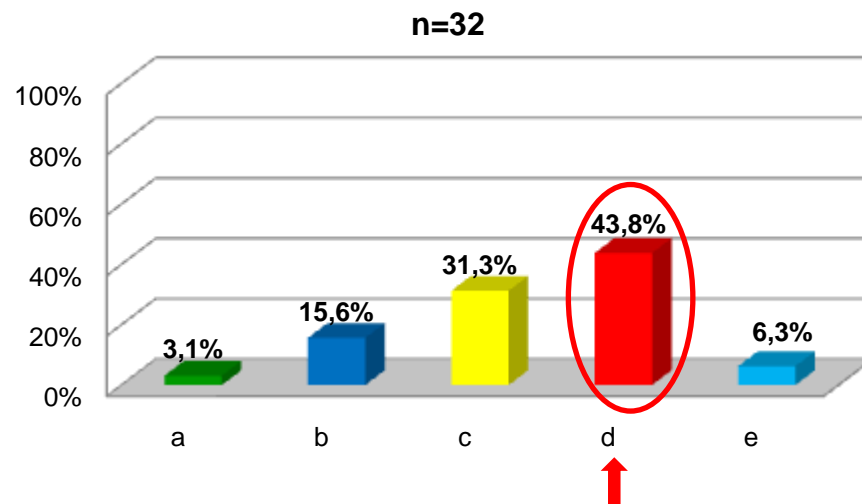
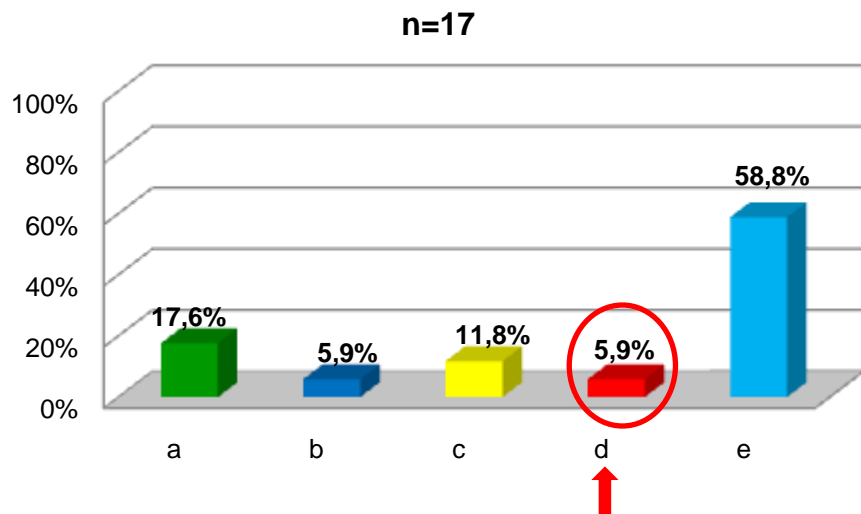
*Douglas Fish, MD.*

#### Which of the following statements was NOT a finding of the SMART study?

- a) Increased cardiovascular risk was associated with discontinuation of antiretroviral therapy.
- b) There were more events of peripheral vascular disease and congestive heart failure in patients who discontinued their antiretroviral therapy.
- c) Discontinuation of therapy was associated with an increase in some pro-inflammatory and coagulation markers.
- d) No increased cardiovascular risk was associated with abacavir.
- e) I do not know; I came to learn.

PRE	%	n
a	17,6%	3
b	5,9%	1
c	11,8%	2
d	5,9%	1
e	58,8%	10
Total	100,0%	17

POST	%	n
a	3,1%	1
b	15,6%	5
c	31,3%	10
d	43,8%	14
e	6,3%	2
Total	100,0%	32



**NOTA EDITORIAL:** Cambio de conocimiento: **+642.4%**, con gran reducción en la proporción de quienes desconocían el tema; se concluye que todas las afirmaciones descritas sobre el estudio SMART son correctas, con excepción de la relacionada con el abacavir puesto que en dicho estudio **SÍ** se observó asociación entre el uso de dicho medicamento e incremento en el riesgo cardiovascular.