

⊙ “Intravenciones” y reducción del riesgo.
 “Intravention” and risk reduction in HIV/AIDS.

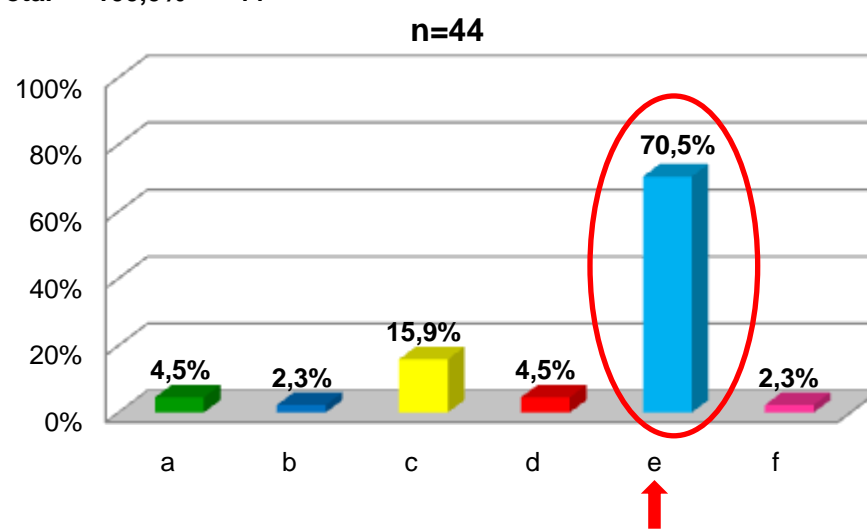
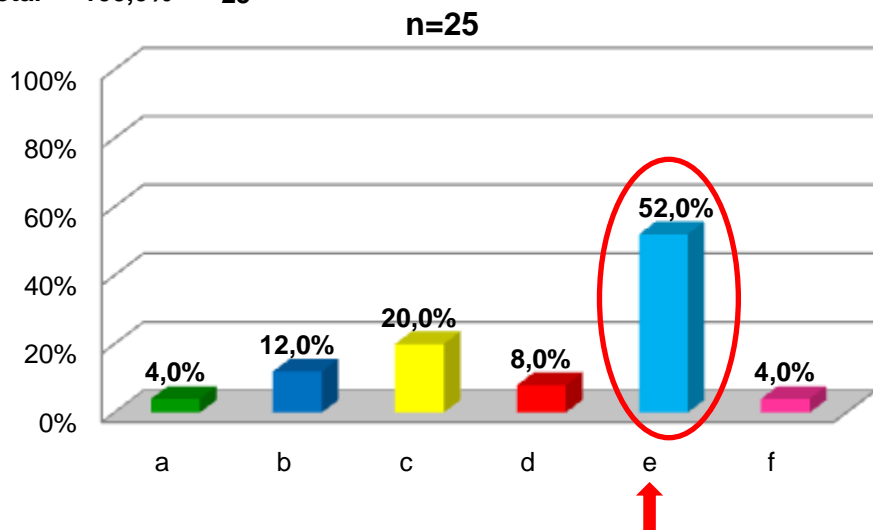
Pedro Mateu-Gelabert, Ph.D.

◆ Which of the following statements apply to “Intraventions” for communities-at-risk?

- a) Prevention activities that are conducted by and sustained through on-going actions of community members.
- b) Activities that can be self-sustaining rather than requiring constant external interventions by trained personnel or professionals.
- c) Intraventions aim at encouraging members of communities-at-risk to implement safe behaviors originated/enacted by some members of that same community.
- d) Intraventions have broader coverage than individual focused Interventions, reaching more people and operate across locations and times.
- e) All of the above.
- f) I do not know; I came to learn.

PRE	%	n
a	4,0%	1
b	12,0%	3
c	20,0%	5
d	8,0%	2
e	52,0%	13
f	4,0%	1
Total	100,0%	25

POST	%	n
a	4,5%	2
b	2,3%	1
c	15,9%	7
d	4,5%	2
e	70,5%	31
f	2,3%	1
Total	100,0%	44



NOTA EDITORIAL: Cambio de conocimiento: **+35.6%**, efectivamente todas las afirmaciones aplican a las "intravenciones". Se recomienda revisar la presentación a través del enlace al volumen XV año 2010 de esta colección de Memorias.